

Housing

Rugged Die cast aluminum with Integrated heat sink high-flow design and clear tempered safety glass. Quick Install wall mounting bracket. IP 65 Rated.

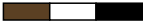
Electrical

Constant current electronic drivers multi voltage meets UL 1310 / UL48 Class 2 with a built-in over-temperature protection. Input voltage from 100-277. 347 and 480 volt is available (VAC 50-60Hz) Certified and tested to the North American UL 8750 Standard for wet location.

Lamping

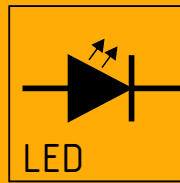
Chip on board (COB) light emitting diodes (LED) 70 CRI with specular forward efficient throw reflector.

Finish

Rugged, long life, oven baked polyester powder coatings with multi-stage pre-treatment for outstanding adhesion. Optional hard color anodizing provides superior protection in harsh and corrosive applications. Standard colors are White, Black, Bronze 

Warranty

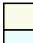
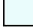
LED Luminaires are warranted against defects in material and/or workmanship for three years. LED modules and drivers are warranted for a period of (5) five years. *(See Detailed Limited Warranty for more information)*



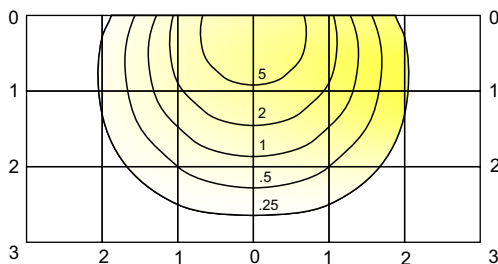
CAPE ONE

Light Emitting Diode Wall Mounted Luminaire

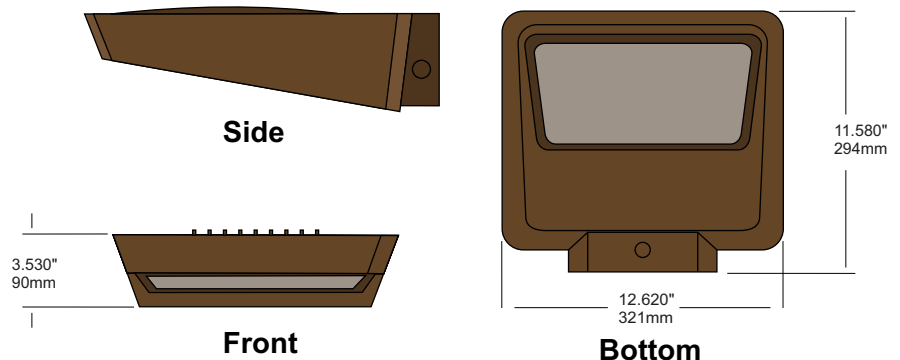


Lamp Wattage Distribution	LED Color	Voltage	Mounting	Options	Exterior Color / Finish
CAPE 1			WM		
52 watt LED (52LED FF) 5,821 Lms	4000K  5000K 	MT (120-277) 347 480		Photo Control (PC) Dark Skies Adaptor (DKA) Dimming (DIM)	Powder Coating White (WHI) Black (MBK) Bronze (BZS) Special (SPC)

Photometrics (52 Watt)



All Values in Fc
Mounting Height = 15'
Grid = Mounting Height



Pappi Lighting

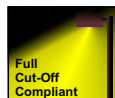
5939 Wallace, St.
Mississauga, ON
Canada L4Z 1Z8

tel: (905) 625-1139

tel: (888) 453-1139

fax: (866) 720-3015

www.pappilighting.com



Project: